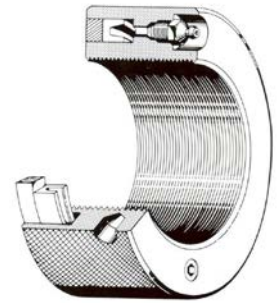


F-Type Nuts

ALUMINIUM SERIES F9.4 & F9.10 with AXIAL F-NIPPLE and RELEASE SCREW



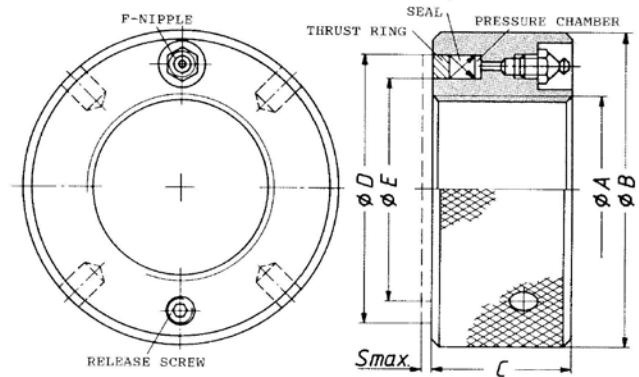
Actuated by manual or motorized grease pump. Self-aligning annular thrust ring with 4 or 10 mm maximum axial travel.

FEATURES:

- Standard bright finish for 120°C max. (250°F).
- Alloy Aluminium bodies.
- Thrust rings alloy steel.
- Unidirectional, all steel, high pressure F-NIPPLE.
- All components rated at 500 bar max. (7,250 psi).

SELECTION:

- Choose diameter "A" to meet or exceed your major arbor thread size.
- Verify diameters D & E contact an uninterrupted counter face.
- Select thrust ring travel "S" as required.
- B & C dimensions must not exceed available space.
- Ensure adequate clamping force has been selected.
- If necessary, select a larger nut model.



MODEL	NOM. THREAD Ø MAX. A		THRUST RING				THRUST RING TRAVEL S		DIAMETER B		THICKNESS C		AXIAL CLAMP FORCE			
			O.D.		I.D.								400 BAR (5,800 psi)		T ₂	
			D	E	T ₁	T ₂										
mm	inch	mm	inch	mm	inch	mm	inch	mm	inch	mm	inch	kN	tn	kN	tn	
F-9.415.517	196	7.750	260	10.236	235	9.252	4	0.157	288	11.339	55	2.165	389	43		
F-9.1015.517			260	10.236	235	9.252	10	0.394	294	11.575	65	2.559				
F-9.416.117	206	8.125	270	10.630	245	9.646	4	0.157	298	11.732	55	2.165	404	45		
F-9.1016.117			270	10.630	245	9.646	10	0.394	304	11.969	65	2.559				
F-9.417.017	222	8.750	285	11.221	260	10.236	4	0.157	313	12.323	55	2.165	428	48		
F-9.1017.017			285	11.221	260	10.236	10	0.394	319	12.559	65	2.559				
F-9.418.017	242	9.500	310	12.205	280	11.024	4	0.157	344	13.543	60	2.362	556	62		
F-9.1018.017			310	12.205	280	11.024	10	0.394	350	13.780	70	2.756				
F-9.419.017	260	10.250	330	12.992	300	11.811	4	0.157	364	14.331	60	2.362	594	67		
F-9.1019.017			330	12.992	300	11.811	10	0.394	370	14.567	70	2.756				
F-9.419.517	286	11.250	355	13.976	325	12.795	4	0.157	392	15.433	65	2.559	640	71		
F-9.1019.517			355	13.976	325	12.795	10	0.394	398	15.669	75	2.953				
F-9.420.017	288	11.375	366	14.409	330	12.992	4	0.157	408	16.063	65	2.559	787	88		
F-9.1020.017			366	14.409	330	12.992	10	0.394	414	16.299	75	2.953				
F-9.1021.017	314	12.375	400	15.748	360	14.173	10	0.394	460	18.110	75	2.953	955	107		
F-9.1022.017	348	13.750	422	16.614	390	15.354	10	0.394	470	18.504	75	2.953	816	91		
F-9.1023.017	378	14.875	450	17.717	420	16.535	10	0.394	496	19.528	75	2.953	820	92		

Special features or requirements can be accommodated. Kindly contact your local agent or call our office directly.