

F-Type Nuts Accessories

F-Type Nuts are pressurized through a high-pressure F-Nipple located on the end face or on the OD of the nut, by either a hand or motorized pump.

F-Nipple

Part Number: 710.101.005

Specially engineered high-pressure check valve.

See page 74 for details.

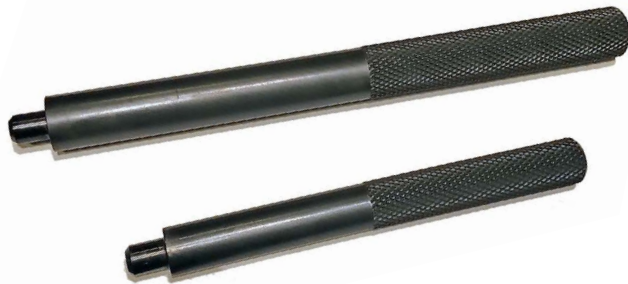


F-Coupler

Part Number: 641.101.103

Heavy duty Four-Jaw coupler.

See page 75 for details.



Assist Bars

Part Number: 801.101.***.***

Install and remove nuts with ease.

See page 76 for details.



High-Pressure Handpumps

Part Number: 112.100.200-*** and 112.110.210-***

The best handpump in the industry; rated for over 1000 bar.

See page 66 for details.

Grease Tube Cartridges

Part Number: 801.200.002

Also available in buckets and drums.

See page 77 for details.



Replacement Parts

Replacement parts are available for all F-Nuts.

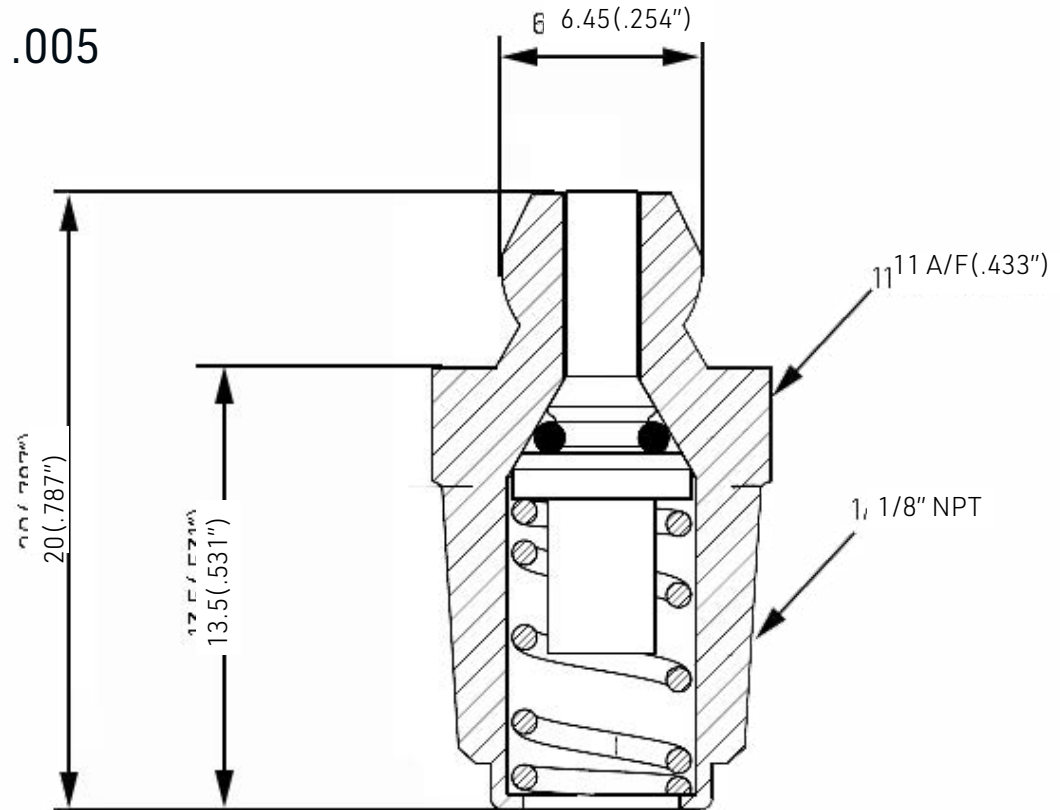
Contact Amtec or your local distributor for more information.



Accessories

F-Nipple

Part # 710.101.005



Specially engineered one-way valve, high-pressure, heavy-duty, grease transfer fitting for use in all Amtec F-Type Hydraulic Nuts and other special lubrication applications.

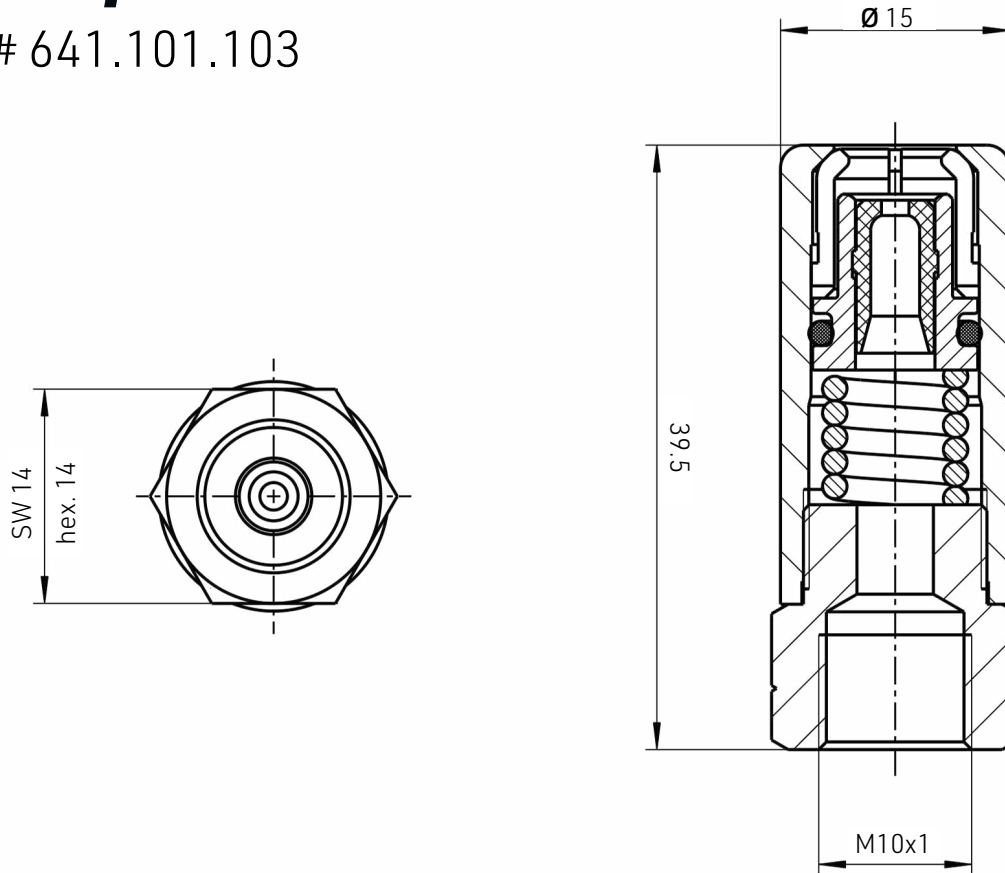
- Hardened steel body
- Internal pin to prevent entry of dirt during operation
- High-strength internal sealing system for long life
- Tip dimensions compatible with many standard, low pressure fittings, allowing the use of low and high pressure grease input connectors as required.
- Always release input pressure at the handpump before attempting to remove the handpump coupler (connector) from the F-Nipple.
- Operating pressure 300 to 700 bar (4350 to 10,150 psi)
- Weight 0.08 Kg (0.18 lbs)

Note: Before installing new F-Nipples, always apply (2) wraps of Teflon tape over the thread, or apply liquid thread sealant, and tighten using 11 mm or 7/16" socket wrench.

Accessories

F-Coupler

Part # 641.101.103



Special Four-Jaw Coupler; heavy-duty, high-pressure version, for reliable, efficient grease transfer from the Amtec Handpumps to the Amtec F-Nipple mounted in the Amtec F-Type Hydraulic Nuts.

- Allows for easy coupling and uncoupling on standard dimensioned grease fittings
- Absolute grip ensured at angles up to 12 degrees
- 4-jaw grip ensures minimal grease leakage around the F-Nipple
- To disconnect; release input pressure from the Amtec Handpump by opening the black thumb screw, tilt the handpump lightly and rotate while extracting from the Amtec F-Nipple.
- This above procedure ensures a long service life for the F-Coupler and the F-Nipple.
- Maximum operating pressure: 700 bar (10,150 psi)
- External Diameter: 15 mm (0.591")
- Width Across Flats: 14 mm (0.551")
- Length: 40 mm (1.575")
- Internal Thread: M10 x 1.0 p
- Weight: 0.04 Kg (0.09 lbs)

Note: Before installing new F-Couplers, always apply (2) wraps of plumbers Teflon tape over the external thread, or apply liquid thread sealant, and tighten using 14 mm or 9/16" open end wrench.

Accessories

Assist Bars



Assist Bar	Used For Amtec Nuts
801.101.125.065	K-7.101L to K-7.202L
801.101.128.095	K-6.104 to K-6.206L
	K-7.103L to K-7.206L
801.101.200.127	F-8.405 to F-8.1011
	F-9.405 to F-9.1011
	K-6.107L to K-6.211L
	K-7.107L to K-7.410L
	H-2.405 to H-2.1011
	H-3.405 to H-3.1011
801.101.280.127	F-8.412 to F-8.1015
	F-9.412 to F-9.1015
	K-6.212L to K-6.215L
	H-2.412 to H-2.1015
	H-3.412 to H-3.1015
801.101.203.190	F-8.415.5 to F-8.1016.1
	F-8.411.017 to F-8.1015.517
	F-9.415.5 to F-9.1016.1
	F-9.411.017 to F-9.1015.517
	K-6.216L to K-6.217L
	H-2.415.5 to H-2.1016.1
	H-3.415.5 to H-3.1016.1

Assist Bar	Used For Amtec Nuts
801.101.305.190	F-8.417.0 to F-8.1019.5
	F-9.417.0 to F-9.1019.5
	F-8.417.017 to F-8.1019.517
	F-9.417.017 to F-8.1019.517
	H-2.417.0 to H-2.1019.5
	H-3.417.0 to H-3.1019.5
	GX-4.415.5 to GX-4.1018
	GX-5.415.5 to GX-5.1018
801.101.360.190B	F-8.1020.0 to F-8.1023.0
	F-8.420.017 to F-8.1020.107
	F-9.1020.0 to F-9.1023.0
	F-9.420.017 to F-9.1023.017
	H-2.1020.0 to H-2.1023.0
	H-3.1020.0 to H-3.1023.0
	GX-4.1019 to GX-4.1025
	GX-5.1019 to GX-5.1025

Use assist bars to retract the thrust ring into the nut body after production and before removing the clamp.

The assist bar also helps remove nuts on sticky arbors while preventing hammering or other costly damage to clamps.

See nut operating instructions for more information on using Amtec assist bars.





Handpumps

ROD Series 112.110.210...

A portable, grease cartridge type handpump with rod-type retraction handle for pressurizing all Amtec Hydraclamp F-Type clamping devices up to 700 bar (10,150 psi) maximum.

Available Models	Maximum Operating Pressure
112.110.210-250	250 bar (3,625 psi)
112.110.210-400	400 bar (5800 PSI)
112.110.210-700	700 bar (10,150 psi)

All components are rated at 850 bar (12,325 psi).

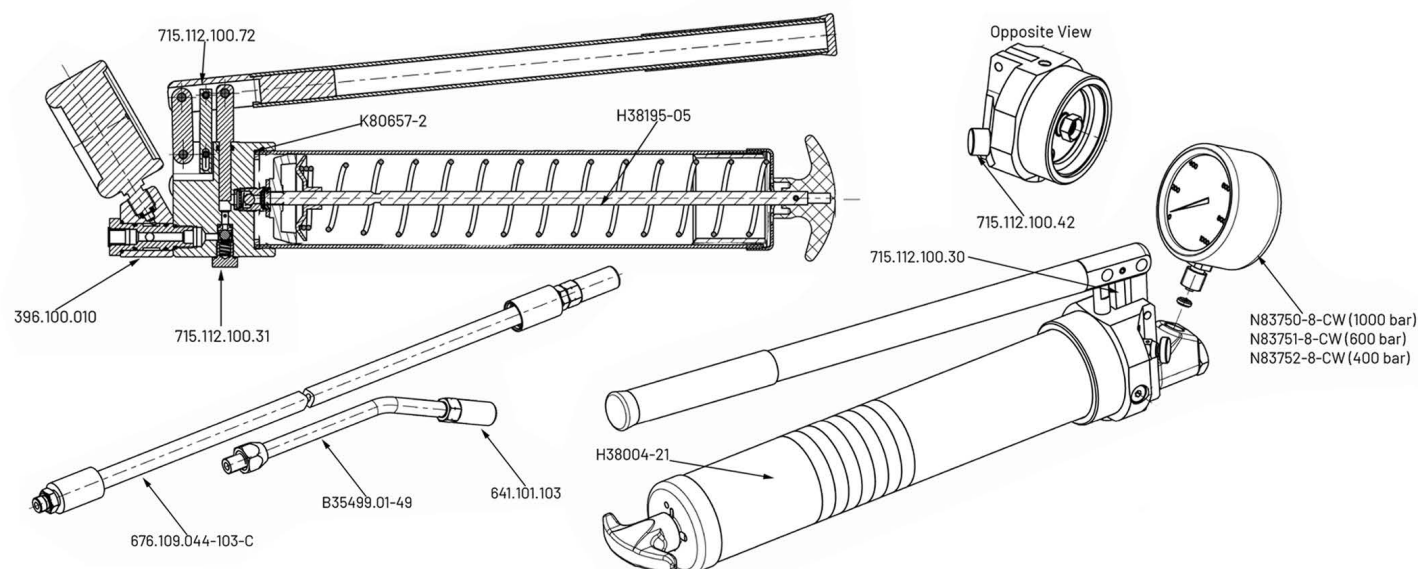
The custom engineered Amtec 112.110.210 handpump exceeds high pressure requirements for all types of hydraulic clamping devices using Amtec F-Nipples or standard fittings. Not to be confused with simple grease guns, many years of field engineering has resulted in a safe, convenient and durable handpump to meet all specifications. Our internal relief valve provides variable, specific clamping control. Once the pre-set pressure is reached, excess grease is dumped back into the grease chamber without any increase in pressure to the clamping device. The pressure release thumb screw dumps pressure from the F-Coupler and extension back into the grease chamber. This allows for easy removal of the F-Coupler from the F-Nipple and prevents damaging the coupler, the nipple or straining the operator. Also, all bypass grease is retained inside the pump to reduce contamination of equipment. The pump's swivel pressure gauge offers visual confirmation of pressure level from any angle.

All components are rated at 850 bar (12,325 psi). Use standard 400 ml grease cartridges with manually inserted red plastic follower. However, the rod-type handpump is also easily refilled using our Bulk Fill System (page 69). The rod type retraction handle requires less force to compress the follower coil spring and ensures positive expulsion of all grease in the cartridge. Our flexible and rigid extensions are provided with every new pump. Flexible is 600 mm (23.62") long and rigid is 160 mm (6.30"). Both extensions carry 4-jaw F-Couplers. The long handle is provided for ease of pumping to maximum pressure. All new Amtec handpumps come with the following service items:

1. Three grease cartridges (one installed in pump)
2. Flexible extension with F-Coupler (rigid coupler comes installed)



112.110.210-XXX Rod Type Handpump Parts Breakdown



Amtec Hydraclamp rod type handpumps are high quality, precision made items with legendary reliability. Because of their high-quality nature and repeated serviceability, your pump enjoys a nearly infinite service life. If you're not comfortable servicing your own pump, please send it to your local distributor or Amtec Hydraclamp directly, where it will be returned to operating condition. The list below shows only common replacement parts, but all parts are available upon request.

112.110.210 - Common Replacement Parts

Part Number	Description	Most Common Items
N83750-8-CW	1000 Bar Pressure Gauge with Protective Cover (for 700 bar pumps)	
N83751-8-CW	600 Bar Pressure Gauge with Protective Cover (for 400 bar pumps)	
N83752-8-CW	400 Bar Pressure Gauge with Protective Cover (for 250 bar pumps)	
641.101.103	F-Coupler	
801.200.002	400ml Preplacement Grease Cartridge (not pictured)	
715.112.100.72	Handle Assembly Kit	
396.100.010	Swivel	
715.112.100.31	Non-Return Valve (Check Valve)Kit	
K80657-2	Body Seal	
H38195-05	Rod Kit Internals	
715.112.100.30	Head & Handle Kit	
H38004-21	Barrel	
676.109.044-103-C	Flexible Extension with F-Coupler	
B35499.01-49	Rigid Extension with F-Coupler	
715.112.100.42	Black Pressure Release Thumb Screw	



Handpumps

CHAIN Series 112.100.200...

A portable, grease cartridge type handpump with chain-type retraction handle for pressurizing all Amtec Hydraclamp F-Type clamping devices up to 700 bar (10,150 psi) maximum.

Available Models	Maximum Operating Pressure
112.100.200-250	250 bar (3,625 psi)
112.100.200-400	400 bar (5,800 psi)
112.100.200-700	700 bar (10,150 psi)

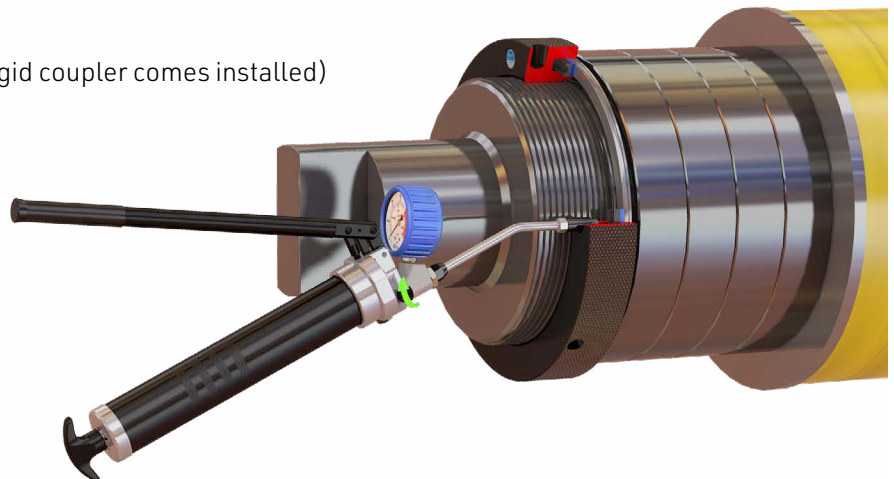
All components are rated at 850 bar (12,325 psi).

The custom engineered Amtec 112.100.200 handpump exceeds high pressure requirements for all types of hydraulic clamping devices using Amtec F-Nipples or standard fittings. Not to be confused with simple grease guns, many years of field engineering has resulted in a safe, convenient and durable handpump to meet all specifications.

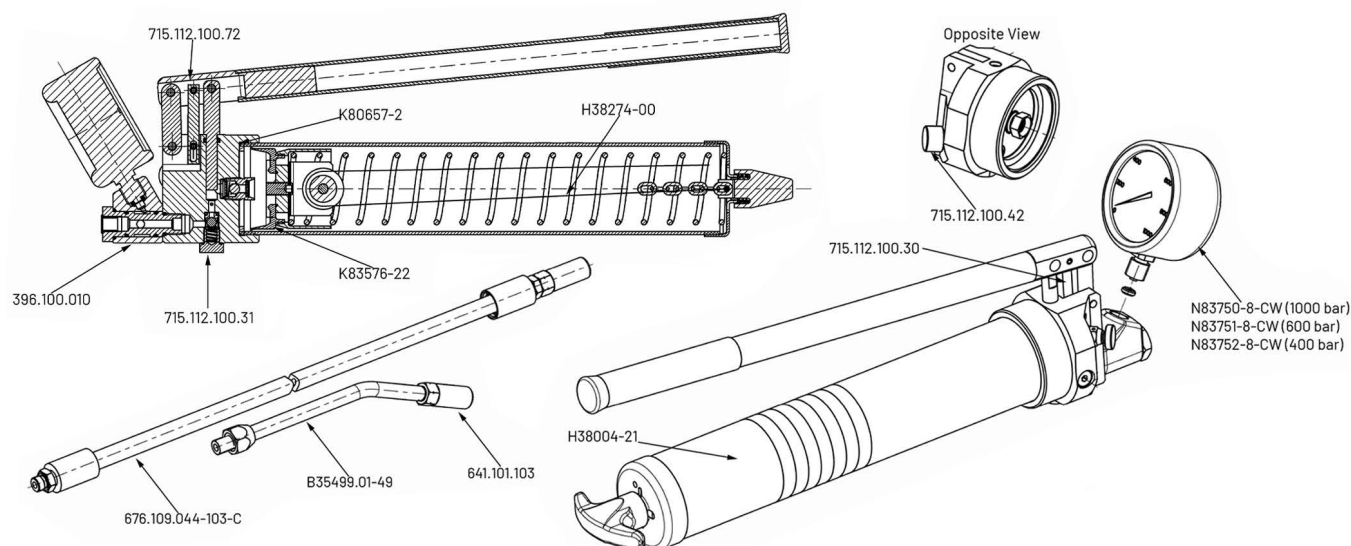
Our internal relief valve provides variable, specific clamping control. Once the preset pressure is reached, excess grease is dumped back into the grease chamber without any increase in pressure to the clamping device. The pressure release thumb screw dumps pressure from the F-Coupler and extension back into the grease chamber. This allows for easy removal of the F-Coupler from the F-Nipple and prevents damaging the coupler, the nipple or straining the operator. Also, all bypass grease is retained inside the pump to reduce contamination of equipment. The pump's swivel pressure gauge offers visual confirmation of pressure level from any angle.

Use standard 400 ml grease cartridges with manually inserted red plastic follower. The chain type retraction handle requires less force to compress the follower coil spring and ensures positive expulsion of all grease in the cartridge. Our flexible and rigid extensions are provided with every new pump. Flexible is 600 mm (23.62") long and rigid is 160 mm (6.30"). Both extensions carry 4-jaw F-Couplers. The long handle is provided for ease of pumping to maximum pressure. All new Amtec handpumps come with the following spare items:

1. Three grease cartridges (one installed in pump)
2. Two spare red plastic follower seals
3. Flexible extension with F-Coupler (rigid coupler comes installed)



112.100.200-XXX Rod Type Handpump Parts Breakdown



Amtec Hydraclamp chain-type handpumps are high quality, precision made items with legendary reliability. Because of their high-quality nature and repeated serviceability, your pump enjoys a nearly infinite service life. If you're not comfortable servicing your own pump, please send it to your local distributor or Amtec Hydraclamp directly, where it will be returned to operating condition. The list below shows only common replacement parts, but all parts are available upon request.

112.100.200 - Common Replacement Parts

Part Number	Description	Most Common Items
K83576-22	Red Plastic Follower Seal	
N83750-8-CW	1000 Bar Pressure Gauge with Protective Cover (for 700 bar pumps)	
N83751-8-CW	600 Bar Pressure Gauge with Protective Cover (for 400 bar pumps)	
N83752-8-CW	400 Bar Pressure Gauge with Protective Cover (for 250 bar pumps)	
641.101.103	F-Coupler	
801.200.002	400ml Preplacement Grease Cartridge (not pictured)	
715.112.100.72	Handle Assembly Kit	
396.100.010	Swivel	
715.112.100.31	Non-Return Valve (Check Valve)Kit	
K80657-2	Body Seal	
H38195-05	Rod Kit Internals	
715.112.100.30	Head & Handle Kit	
H38004-21w	Barrel	
676.109.044-103-C	Flexible Extension with F-Coupler	
B35499.01-49	Rigid Extension with F-Coupler	
715.112.100.42	Black Pressure Release Thumb Screw	

Accessories

Grease Recommendations

for all AMTEC Pumping Systems

General specifications for cartridge, pail or barrel

A) For North America, Europe and Asia

Note: Summer conditions/heated facilities use EP-2 (Calcium Sulphonate)

Winter conditions/unheated facilities use EP-1 (Calcium Sulphonate)

- Petro Canada Peerless OG-1/2;
- Shell Alvania EP-1/2;
- Esso/Exxon Unirex EP-1/2;
- Mobil Mobilith AW1/2;
- Or equivalent NLGI-1/EP-1 grease, penetration 325 at 25°C
- Or equivalent NLGI-1/EP-2 grease, penetration 270 at 25°C

B) For Tropical Climates

- Petro Canada Peerless OG-2;
- Shell Alvania EP-2;
- Esso/Exxon Unirex EP-2;
- Mobil Mobilith AW2;
- Or equivalent NLGI-2/EP-2 grease, penetration 270 at 25°C

C) For Sub-Zero Climates

- Petro Canada Peerless OG-0;
- Shell Alvania EP-0;
- Esso/Exxon Unirex EP-0;
- Mobil Mobilith AW0;
- Or equivalent NLGI-0/EP-0 grease, penetration 365 at 25°C

